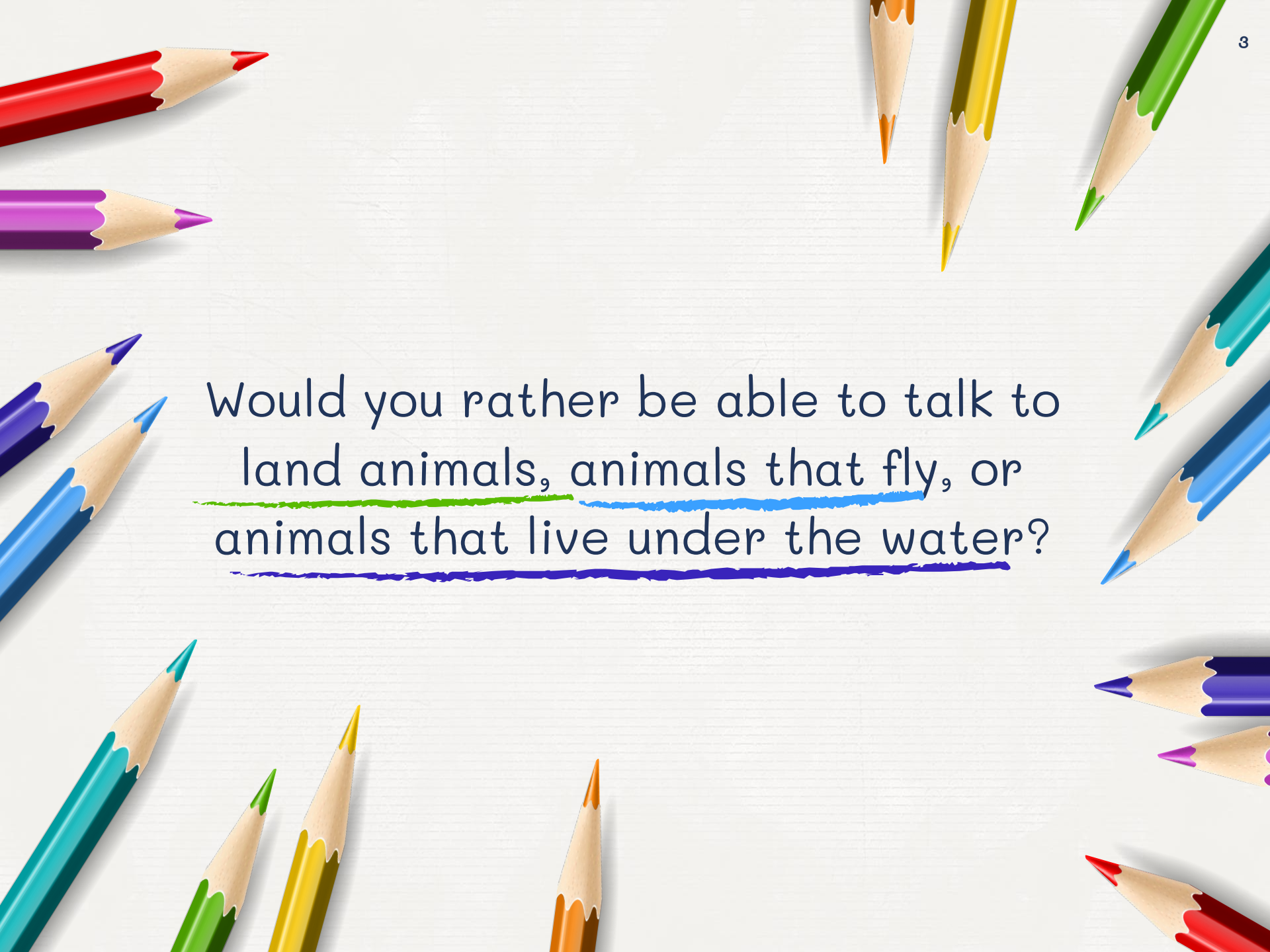




Hello!

Please type your name and
grade into the chat box

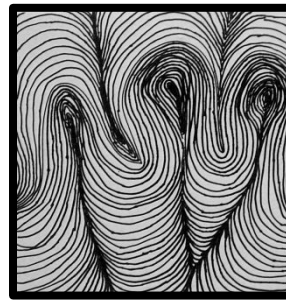
We will get started shortly



Would you rather be able to talk to
land animals, animals that fly, or
animals that live under the water?

DESIGN ELEMENTS
COLOR
LINE
SHAPE
VALUE
SPACE
UNITY
DESIGN PRINCIPLES
BALANCE
RHYTHM
EMPHASIS
SCALE

Elements



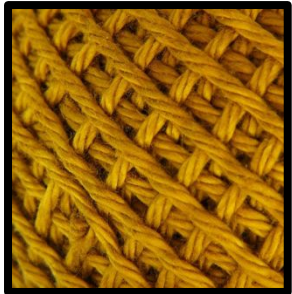
Line



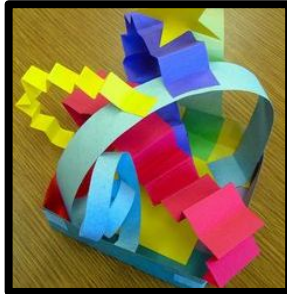
Shape



Color



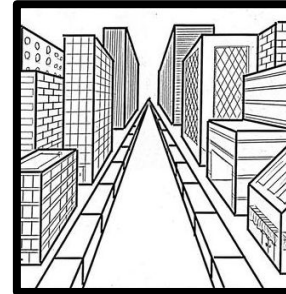
Texture



Form



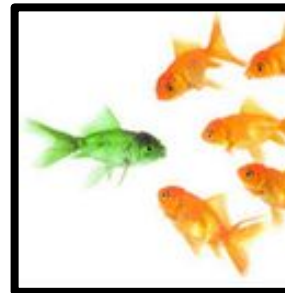
Value



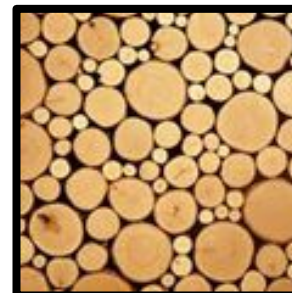
Space

Principles

(choose 7)



Emphasis



Rhythm



Contrast



Balance



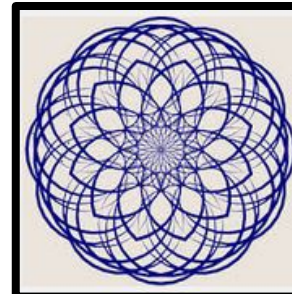
Movement



Pattern



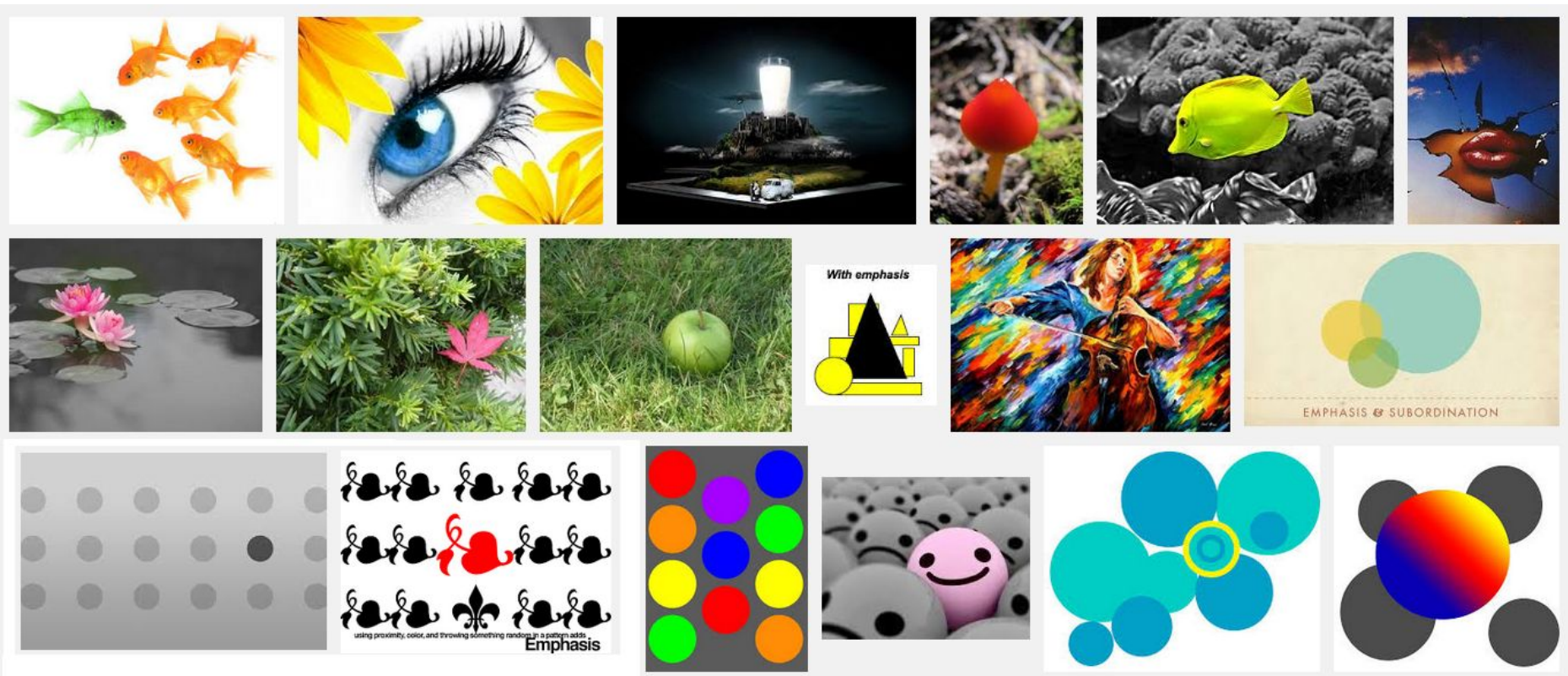
Proportion



Unity / Harmony

Emphasis

Emphasis: an area or object within an artwork that draws attention and becomes a focal point.

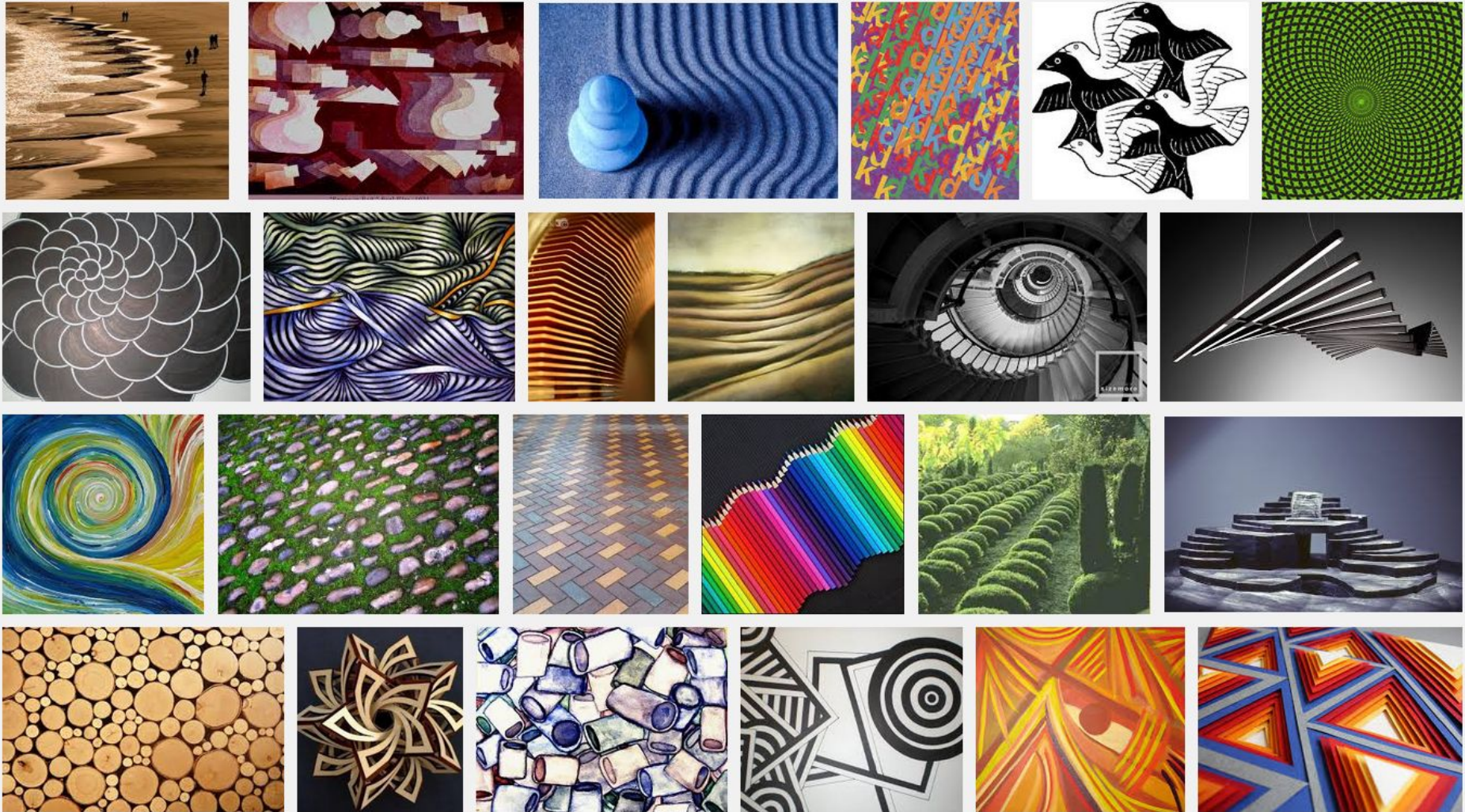


01:09



Rhythm

rhythm - A **visual** tempo or beat. Regular **repetition** of elements often achieved through the careful placement of repeated components which invite the viewer's eye to move through the painting.



01:09



Contrast

Contrast: The juxtaposition of different forms, lines, or colors in a work of art to intensify each element's properties and produce a more dynamic image.

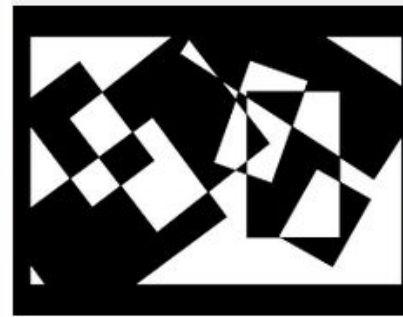


01:09



Balance

Balance: Arranging elements so that no one part of a work overpowers, or seems heavier than any other part.



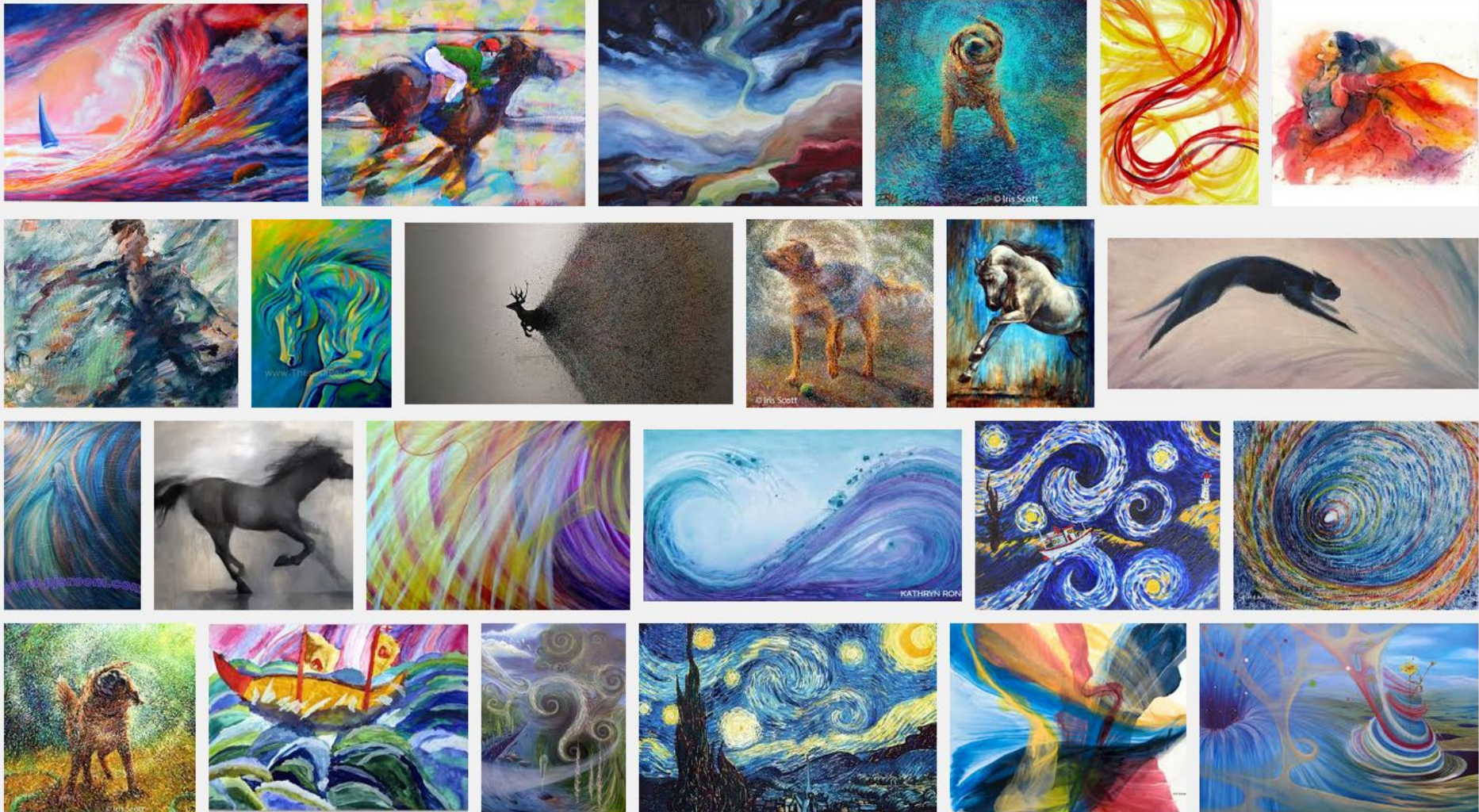
01:09



Movement

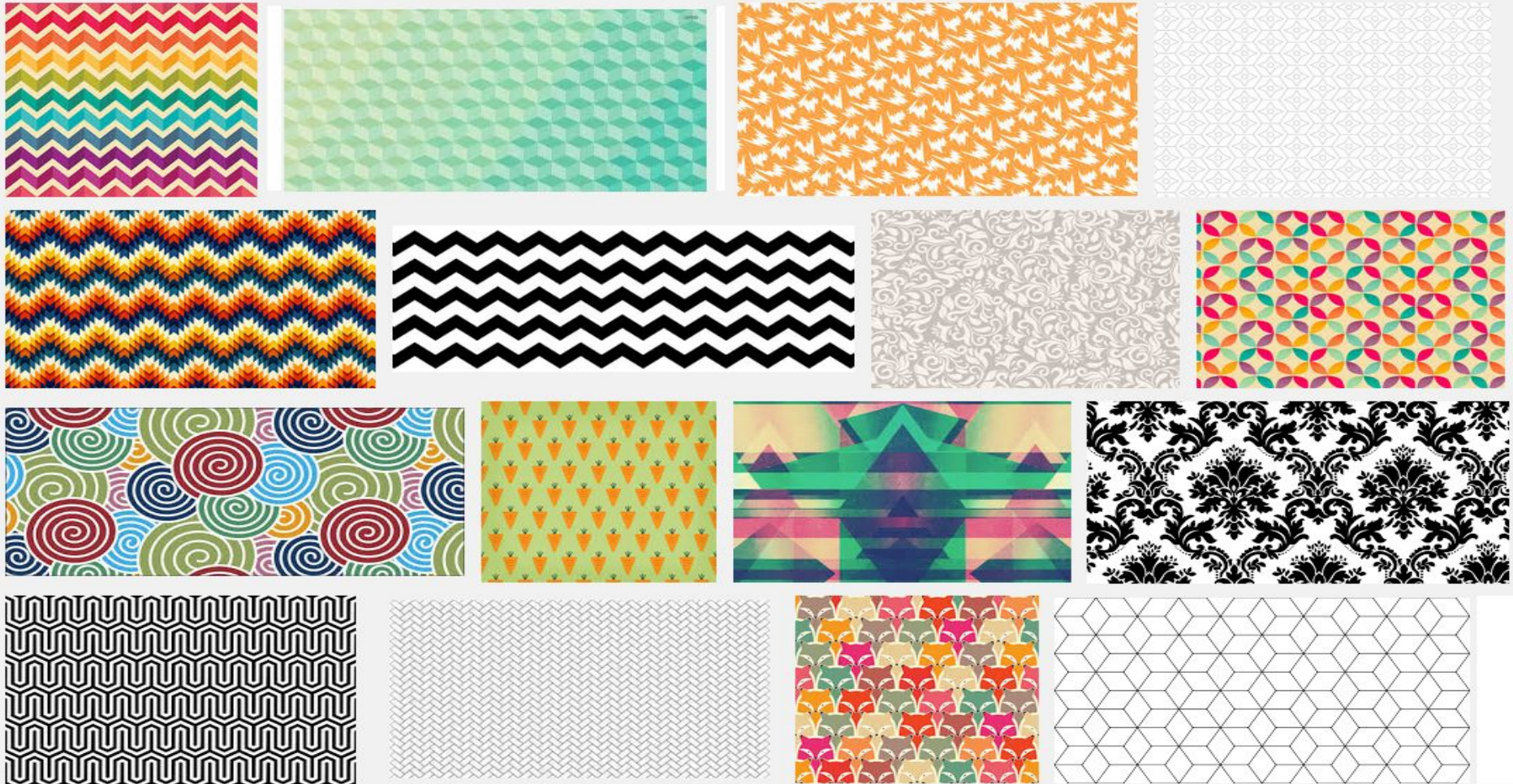
Movement: Using design elements to give the feeling of motion and to guide the viewer's eyes throughout the artwork.

Movement: Using design elements to give the feeling of motion and to guide the viewer's eyes throughout the artwork.



Pattern

Pattern: Repeating element or a group of repeating elements of design.



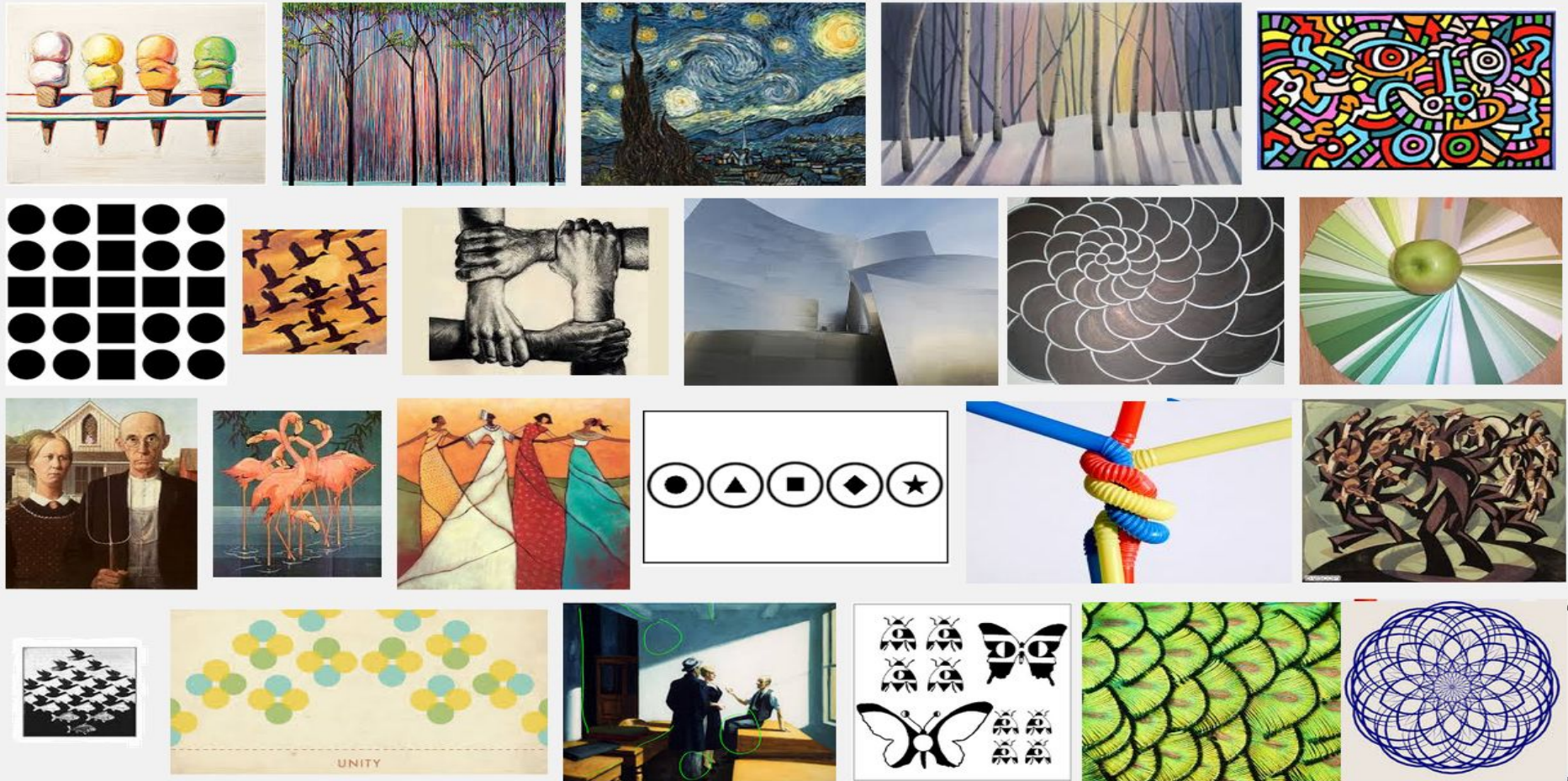
01:09



Unity

(Variety / Harmony)

Unity: Successfully combining the elements of art in an aesthetically pleasing or interesting work of art. (subjective)



01:09

